

Installation Instructions

Prestige Brackets

Required Equipment

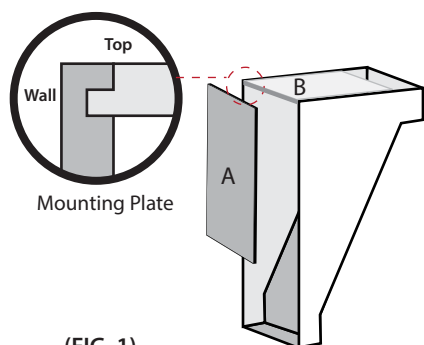
- Pencil 
- Phillips drill-bit head and/or Phillips screwdriver 
- Rubber Mallet / Wood Block & Hammer 
- Carpenter's level 
- Measuring tape 
- Brad Nailer (Optional)

* Some special equipment may be required depending on options selected.

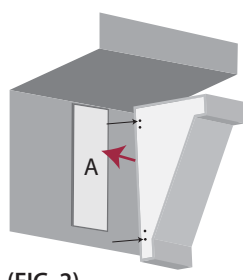


Scan for Installation Video

Decorative Bracket Instructions



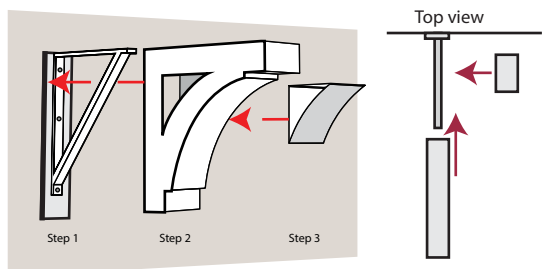
(FIG. 1)



(FIG. 2)

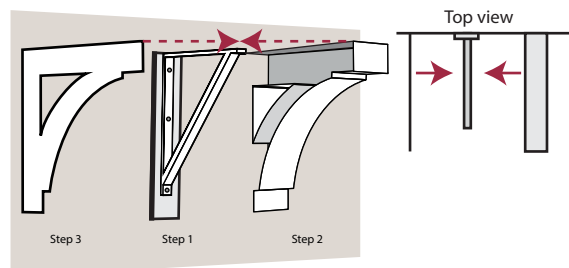
- 1 Remove mounting plate (A) from bracket.
- 2 Mark outer side of bracket where desired on house.
- 3 Measure in bracket wall thickness from bracket outer mark.
- 4 Position vertical mounting plate (A) on wall and align with inset mark.
- 5 Fasten mounting plate with 1 fastener and use level to plumb.
For additional adhesion, a bead of solvent based adhesive (ie. PL Premium) can be applied to the back of the mounting plates.
- 6 Fasten mounting plate completely using a level for vertical plumb and stainless steel fasteners (see below for fastener information).
- 7 Align top mounting plate (B) with the vertical mounting plate (A) and use a framing square to insure that it projects from the wall at a 90 degree angle. Fasten with stainless steel fasteners. (FIG. 1)
- 8 Slide the bracket over the mounting plates and secure with stainless steel brad nails 2" from top and bottom on both sides or small head screw. You may want to affix with WeldOn 705 and no fasteners by taping in place until WeldOn 705 is set. (FIG. 2)

Decorative Bracket Around Metal Structure Instructions



If internal metal frame (Supplied by other) is required to support load follow these steps

- 1 Install the mounting plates as above.
- 2 Fasten metal brace to building structure in the centre of the mounting plates with Building Code compliant fasteners. (Step 1)
- 3 If the bracket has an opening in the centre, remove the loose filler panels.
- 4 Slide Bracket over metal brace mounting plates and fasten with stainless steel brad nails. (Step 2)
- 5 Place the filler panel back into the centre of the bracket (step 3) and secure with PVC WeldOn 705 adhesive. *Use provided blue tape or clamps to hold in position while adhesive sets.*
- 6 When dry, smooth the edges with 300 grit sandpaper.



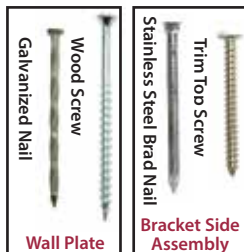
Alternatively; if your bracket comes with one side loose to go around metal frames follow these steps .

- 1 Install the mounting plates as above.
- 2 Fasten metal brace to building structure in the centre of the mounting plates with Building Code compliant fasteners. (Step 1)
- 3 Remove loose side from bracket.
- 4 Slide Bracket over metal brace and mounting plates and fasten with stainless steel brad nails. (Step 2)
- 5 Apply PVC WeldOn 705 adhesive to the groove of the loose side and place back onto bracket (Step 3). *Use provided blue tape or clamps to hold in position while adhesive sets.*
- 6 Fasten bracket to mounting plates with stainless steel brad nails.
- 7 When dry smooth the edges with 300 grit sandpaper.

Select the Correct Fastening System

Wood

Installation of wall plate (A) to a wooden surface typically will use wood screws or nails. If you are installing the bracket in an area with higher than average moisture or salt content (seaside) you should use either galvanized or stainless steel fasteners. You must choose a fastener that is long enough to have minimum penetration of 1" to a solid substrate. Predrilling holes is recommended.



Brick/Block/Stone

Installation to a hard surface such as Brick, Blocks or Stone will require the use of plastic sleeve anchors. Predrill the holes in your mounting plates and transfer the position of the fasteners onto the wall. Using a hammerdrill and masonry bit, drill a hole recommended by the sleeve anchors. Clean out hole of debris and tap in insert. Fasten mounting plate as normal. The use of Tapcons is a quick alternative, for the more advanced user.

