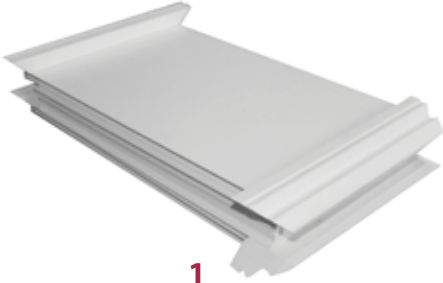
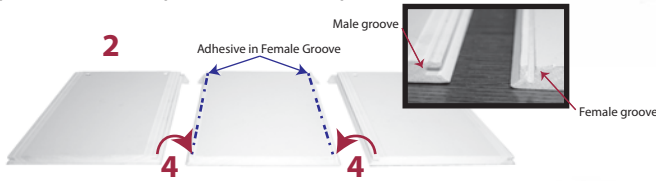


# Prestige FLEX Column Extender Installation Instructions

## COLUMNS



**1)** Column Extender is shipped as four panels in a flat pack 8" or 10" Square



**2)** Lay out 1 female panel and 2 male panels.

**3)** Apply Weld-On 705 adhesive (not included with extender) to the female grooves.

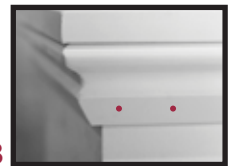
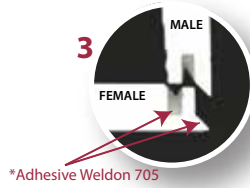
**4)** Press fit the male panels into the female panel.

**5)** Stand the 3 sides up, align the trim and gently tap the joints together using a rubber mallet.

**6)** Place the 3 sided extender on top of your FLEX column and around structural post.

**7)** Apply adhesive to the female grooves and tap the 4th panel into place.

**8)** Confirm vertical alignment and fasten extender to FLEX column with pin nails through the astragal trim.



Astragal Trim

Note: Panels can be cut to specific height before assembly.

Painting Instructions and Warranty:  
[prestigedi.com/resources/#flexcolumn](http://prestigedi.com/resources/#flexcolumn)