

# Assembly & Installation Instructions

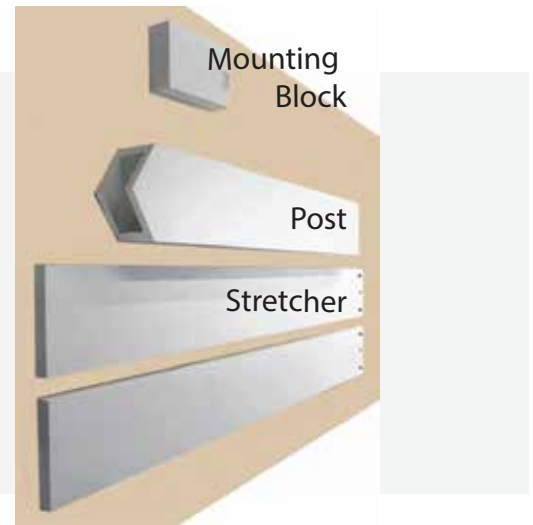
Congratulations on your purchase of your new Prestige Gable™ Detail. These gables are designed to bring a classical architectural design to your home, and are engineered for easy installation. Before you begin your install, please take a few moments to unpack and review the contents of your package. Each Gable Detail will be installed behind the fascia board. The below install instructions are specific to Flex Gable Details.

**Note:** The below installation instructions are suggested practices only. Fastener length may vary depending on product purchased. Ensure for 1" penetration into wood structure.

## Materials Included:

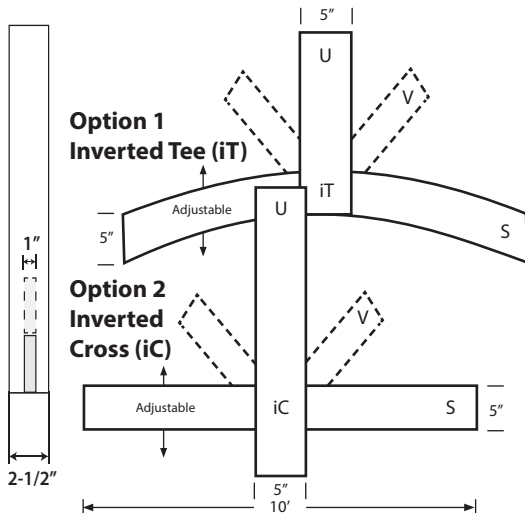
- One (1) gable post with mounting block
- Two (2) gable stretchers
- #8, galvanized wood screws for assembly included
- Optional "V" stretcher

\*Installation Fasteners not supplied.  
#8 Wood Screws typically 2" to 3" Long Required



Note: Gable Detail shown is 6"(5.5" actual) size.

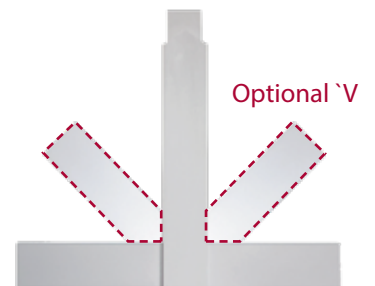
## Gable Detail: Assembly



- 1 On a clean flat surface, layout the gable detail parts.
- 2 Select desired layout, either iT or iC and position stretchers.

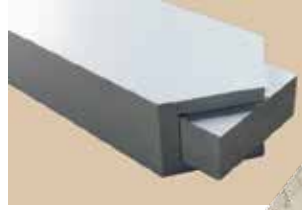
*It is recommended not to exceed 4" from the bottom of gable post for iC assembly.*

- 3 Using the #8 galvanized wood screws provided, toe screw the stretcher to the middle gable post. The holes are pre drilled for easy assembly.
- 4 Fasten both stretchers to either side of the gable post.
- 5 Optional "V" stretchers are predrilled for easy connection using provided fasteners install into post and horizontal stretcher.



# Gable Detail: Installation Instructions

- Once the gable detail is assembled, remove the mounting block positioned in the gable post.
- Using four (4) #8 galvanized wood screws fasten the mounting block to the top inside gable peak sub-fascia. (fasteners not included)
- Sliding Gable into place to prefit will reveal if any stretchers require resizing. If a shorter post is desired it can be cut. (ensure that you match your required roof pitch)
- Once mounting block is secured, with stretchers attached, slide gable post over block and fasten to the mounting block using four (4) 2-1/2" #8 or #6 galvanized wood screws. (Fasteners included)
- Once gable post has been fastened to the mounting block, level post before fastening stretchers to back of sub fascia.
- Secure All stretchers with two (2) screws from the back, you securely lock the gable into place both ways.



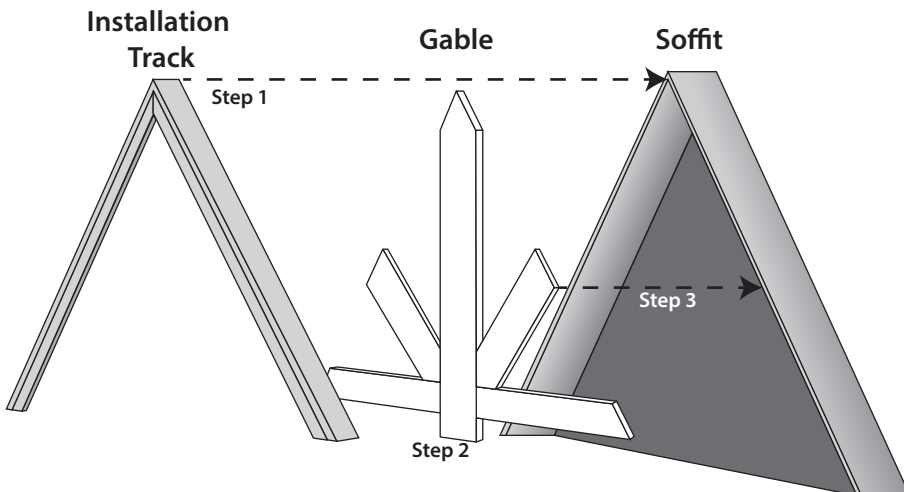
## Installation Track Instructions:

For installation where soffits have already been installed, an installation track is recommended.

Step 1: Install track into roof line using 2-1/2" screws minimum, insuring your fasteners reach into structure. (Fasteners not included) 1" Min.

Step 2: Measure and trim gable detail to fit.

Step 3: Install gable detail into track screwing fasteners from the back. Toe screw the stretchers into the structure of roof using 3-1/2" screws. (Fasteners not included)



***Congratulations, your Prestige Gable is now completely installed and ready to enjoy. While not required, your gable can be painted.***