

DecorTrim

G3 Gable

G6 Gable

Recessed Flush  
Trim Columns

*Prestige*   
**PRODUCTS**

Innovative PVC Systems

# We Fit the Need



## FLEX

Stocked Items

- A selection of styles and sizes.
- Stocked at the distributor which allows for faster delivery.



## STANDARD KITS

Stocked Items

- Widest selection of column shafts and skirts.
- Standard Columns are a complete column kit with skirts and install system.



## PREMIUM KITS

Special Order

- Predesigned premium columns allowing for visual selection.
- No wait for a custom quote.



## CUSTOM

Special Order

- Built to suit your specific needs.
- Submit your plans through your building material supplier or to [www.prestigediy.com](http://www.prestigediy.com)

## SMART & BEAUTIFUL

Prestige Columns™ feature beautiful, unblemished column panel faces. Each panel incorporates our innovative SmartLock™ Corner technology, resulting in a column that is assembled without the need for nails or screws marring the panel face. The SmartLock™ Corner system also ensures true, well-defined corners, and simplifies installation.

Prestige Columns™ are decorative columns only and are NON-LOADBEARING.

If the column needs to support any weight, a sufficient load-bearing structural post must be in place before installation begins. Please consult your local building codes for specific requirements



FLEX Plain Panel  
Columns

180

**EASY**<sub>PICK</sub>

1

2

3

*Prestige* **diy**  
**PRODUCTS**

Innovative PVC Systems



# FLEX

## EASY PICK

1

2

3

### Step 1: Column Shaft

Choose your column shaft and width

1

- 8" or 10" Square Plain Panel
- 8" or 10" Square Recessed Panel\*
- 8" Square Chamfered Column  
Square Columns are 9' high  
(May be resized to 8')
- 12"x8" Tapered Square  
Tapered Columns are 4' 5" or 6' high

2

### Step 2: Installation Kit

Convenient Package

- Squaring Corners
- Fasteners and Conicals
- Adhesive

3

### Step 3: Caps and Bases

Optional cap/base enhancements

Four (4) Styles to choose from  
(Sold as set-top/bottom)

- **Craftsman** (4"h Taper & 6"h Square)
- **Tuscan** (6"h Square)
- **Chamfered** (6"h Square)
- **Contemporary** (6"h Square)



### Fast, Easy & Great Value!

Available stock in both tapered and non-tapered profiles, Prestige FLEX Columns™ offers you the same great look but with an even better price point. The modular nature of Flex columns allow the customer to control costs further by only picking the parts they need.

Made from premium PVC, the SmartLock™ Corner system ensures true, well-defined corners, and a fast & easy installation while enhancing your homes exterior.

### Available stock on hand FLEX Column Profiles :

- PVC, Square Plain Tapered 8"-12" for 4', 5' & 6' Heights
- PVC, Square Plain 6", 8" & 10" at 107.5" Height
- PVC, Square Recessed, 8" & 10" at 107.5" Height
- PVC, Square Chamfered, 8" at 107.5" Height
- PVC, Square Contemporary, 8" & 10" at 107.5" Height







Raised Panel  
Column

*Prestige* **diy**  
**PRODUCTS**

Innovative PVC Systems





# Standard Kits



- 
**SmartLock™ Technology**
- 
**Paintable**
- 
**Adhesive Supplied with KITS ONLY**
- 
**No Putty**
- 
**No Face Nailing**
- 
**Installation Squaring Corners**
- 
**Skirt Selection Included**

## Square Columns, Tapered and Non-Tapered Profiles

Available in both tapered and non-tapered profiles with a variety of panel styles to choose from. Prestige Columns™ are the preferred choice for premium quality, square architectural columns.

Available in:  
**WOODGRAIN**

Available:  
**PAIN AND STAIN FINISHES**



**STANDARD KITS**

*Square Raised*

*Square Recessed  
Basecap Trim*

*Square Fluted*

*Square Recessed*

*Tapered Raised*

*Tapered Plain*

*Tapered Recessed*

*Square Plain*

*Contemporary*

*Atlantic Flare*

*Tapered Recessed  
Basecap Trim*

# COLUMN PANEL PROFILES

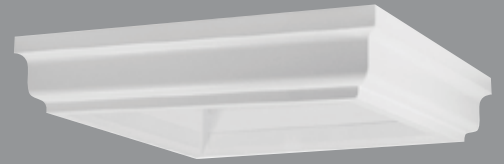




2: BASE CAP



3: CROWN



4: SOLID CROWN



5: TUSCAN



6: CHAMFERED



7: CONTEMPORARY



1: CRAFTSMAN

CAP/BASE HEIGHT		2"	4"	5"	6"	8"	10"	12"	32"	44"
1.			•		•	•	•	•	•	•
2.			•		•	•				
3.			•	•	•					
4.		•								
5.				•	•	•	•			
6.			•		•	•	•	•		
7.			•		•					

Nominal Heights listed above

Actual Heights as follows:

Nominal	2"	4"	5"	6"	8"	10"	12"	32"	44"
Actual	1.5"	3.5"	4.5"	5.5"	7.25"	9.25"	11.25"	32"	44"

# CAP & BASE PROFILES





Contemporary II



Cochren Flare I



Atlantic Flare



Bluewater



Bayshore II

*Prestige* **diy**  
**PRODUCTS**

Innovative PVC Systems



# Premium Kits

**PREMIUM COLUMN™** style kits reflects style of elegance that has been produced over the years for architects and builders as repeat custom profiles that have earned their place in the series. Many premium columns come in 8" to 14" widths and 4' to 12' heights. Some styles come in larger standard format ie: Bluewater.



Cochrane Flare

Franca Flare

Premium Column Kit Shaft Dimensions	7"	8"	9"	10"	11"	12"	14"	16"	18"	20"	24"
Atlantic Flare		◆		◆		◆	◆	◆	◆	◆	◆
Barrel Flare	◆		◆		◆						
Bayshore II		◆		◆		◆	◆				
Bayside I		◆		◆		◆	◆				
Bayview I		◆		◆		◆	◆				
Bluewater						◆	◆	◆	◆	◆	◆
Cochren Flare I		◆		◆		◆					
Cochren Flare II		◆		◆		◆					
Contemporary Flare I		◆		◆		◆	◆				
Contemporary Flare II		◆		◆		◆	◆				
Edgewater I		◆		◆		◆	◆				
Lakeside I		◆		◆		◆	◆				
Riverside I		◆		◆		◆	◆				
Unique Flare		◆		◆		◆	◆				
Homestead		◆		◆		◆	◆				
Franca Flare		◆		◆		◆	◆				

Note: Select a 10" Premium column or larger if you need to fit around a 6x6 post







Nova Scotia Library



*Prestige*  
PRODUCTS

Innovative PVC Systems





# Custom

## Never seen before custom columns!

Prestige custom columns can be tailored to fit your project. Whether you are looking for a clean modern look or something a little more ornate we are happy to work with you to bring your idea into reality.

## We Fit the Need!

- 4" to 48" wide
- 2' to 48' High (18' seamless)
- Made to Suit your need



Available in:  
**WOODGRAIN**



Available:  
**PAINT AND  
STAIN FINISHES**

